

## INSTRUCTIONS FOR USE

1. We suggest to disinfect the film before use. After exposure to x-rays, and holding ER-GONOM-X up-right, open the liquid pouch by rolling it up. It is important to squeeze the pouch to its extremity, ensuring that all the monobath travels to the opposite film end, then un-roll it.



2. Start agitation by sliding the fingers from the top all way down to the bottom of the film, repeating this movement for 50 secs. min. IT IS IMPORTANT TO AGITATE: CONSTANTLY, FOR 50 SECS. AND IMMEDIATELY AFTER THE MONOBATH POUCH HAS BEEN OPENED, otherwise image may result spotted.



3. When development and fixation are complete, turn the film upside down, pushing the monobath back into its original place. Open film by prising apart, remove the film and rinse it under water, even by sliding the fingers on its surface to remove all the monobath residual, otherwise the picture may turn yellow.



DENTALFILM  
**E-SPEED**  
**ERGONOM-X**  
SELF-DEVELOPING X-RAY DENTAL FILM  
DENTALFILM s.r.l.

VIA VERGA, 30

10036 SETTIMO TORINESE (TO) - ITALY

Tel. 011/800.00.90 - Fax 011/800.00.62

[www.dentalfilm.com](http://www.dentalfilm.com)



**NO!**

Do not block the middle part - Follow instructions as per point 2.



CE  
0476

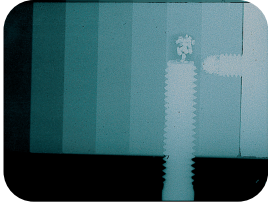


### EXPOSURE CHART

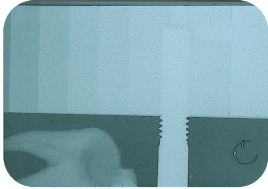
REGION		TIME IN SECONDS (70kV 8 mA)
Maxillary	Molar	0,30 Sec.
	Premolar	0,25 "
	Anterior	0,20 "
Mandibular	Molar	0,30 Sec.
	Premolar	0,25 "
	Anterior	0,20 "

"E" Class Speed. The above mentioned recommendations are for information only. Adjust time and condition according to apparatus.

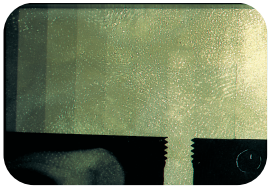
# TROUBLE SHOOTING GUIDE



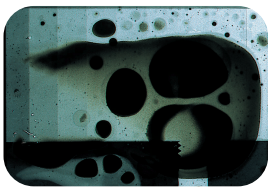
**OVER EXPOSURE** - Dark and illegible image. Decrease exposure time or verify if the x-ray voltage conforms with the voltage referenced in our exposure chart (70 Kv-8mA). If voltage doesn't conform, increase or decrease exposure times. For 50, 60 or 75 kv units, modify exposure time 20-30% (+ or - 2-3 tenths of a second).



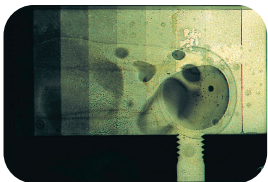
**UNDER EXPOSURE** - Faint image and lack of detail. Increase exposure time, otherwise check the length of the cone against the apparatus voltage. Please note that a "long" cone may cause the appearance of under exposure. If a "long" cone is used, modify the exposure time 20-30%.



**YELLOWING EFFECT:** - Insufficient or partial rinsing. A monobath residual which oxydates after just a few seconds the film is pulled out from the monobath, causes this yellowing effect. Rinse both sides of film thoroughly. If need be, the film can be rinsed under running water for 1 minute. While rinsing, slide your fingers on the film's surface removing the entire monobath solution. Film won't be damaged.



**SPOTS** - Insufficient activation and agitation. Black or transparent spots may appear on the developed and fixed film. They may appear in different shapes and forms: small or large spots, black dots, streaks, haloes, etc. In all cases they are caused by insufficient agitation which allows air bubbles to remain. Activate and agitate as per red instruction card contained in each box of ERGONOM-X. Streaks may appear even when film is not dried properly.



**VARIOUS DEFECTS** - This sample shows film that's been both under exposed and insufficiently agitated. It's important to start agitation (massaging the film) immediately after the liquid pouch is opened. Release all of the liquid contained in the pouch and massage the liquid onto the film in a back and forth motion for 50 seconds. Avoid storage of the film in a refrigerator as cool temperatures cause a hardening of the monobath solution reducing its flow characteristics.

For more detailed informations, please visit our site:  
[www.dentalfilm.com](http://www.dentalfilm.com)